

QUICK START GUIDE

OPN 2001 Pocket Memory Scanner

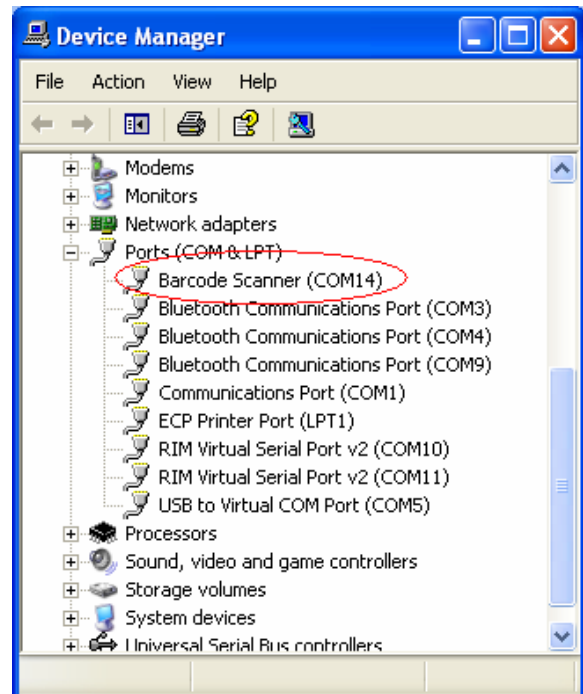


The OPN 2001 Pocket Memory Scanner makes barcode data collection simple for anyone. Using this scanner is straightforward – scan a barcode and it will be stored automatically. When you make a mistake, the lower button allows you to re-scan the barcode in order to remove the item from memory. The device is equipped with a standard USB port which is also used to charge the internal battery. For easy data transfer, connect the OPN 2001 to a USB port and run the download utility.

Instructions:

Follow these simple steps to use the OPN-2001:

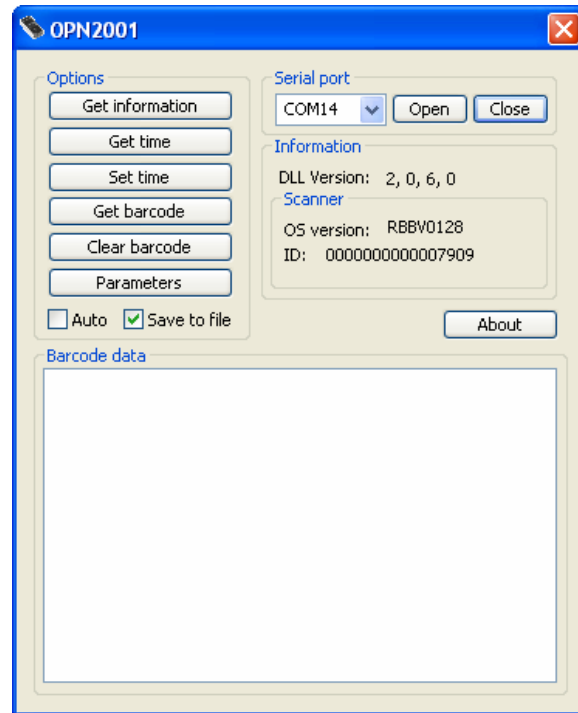
1. Install the **optousb driver** package.
This contains a USB-to-serial driver necessary for communication with the OPN-2001. This driver is located of the USB Driver folder.
2. After installation, connect the OPN-2001 to the computer. Go to **Device Manager** and take note of the COM port assigned. Look for **Barcode Scanner (COM #)**



- Unzip and save the **OPN2001_Demo** on the PC. The file is located on the **OPN 2001 Download Utility** folder.



Run the OPN2001 Download Utility by double click the **OPN2001.exe** file. When it opens, select the COM port you noted in Step 2, and hit the **Open** button.



- To verify if the OPN2001 is communicating with your Download Utility, click **Get Information**. The unit will beep and respond with OS version and ID.
- Before acquiring the collected data, place a check mark of the selection **Save to file**. Save to file

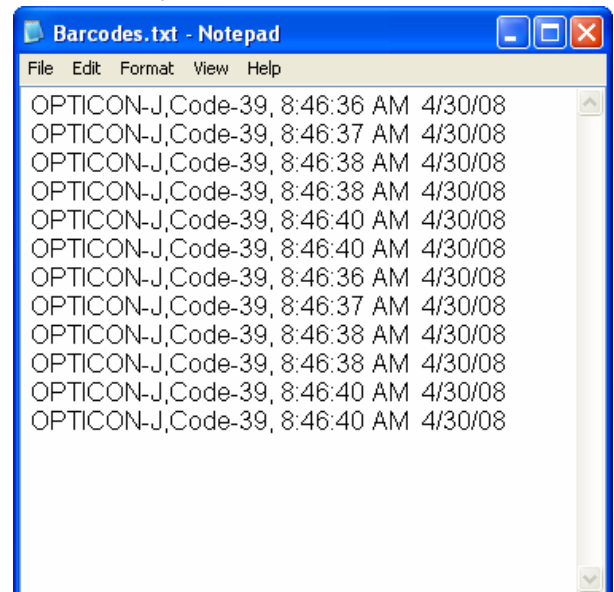
Click on **Get Barcode** box. The barcode data is transmitted and saved on a text file named **Barcodes.txt** on the same directory the Download Utility is located.



- Open the file and you are ready to use your collected data.

The data format is:

Barcode Data, Barcode Type, Time, Date <CR><LF>

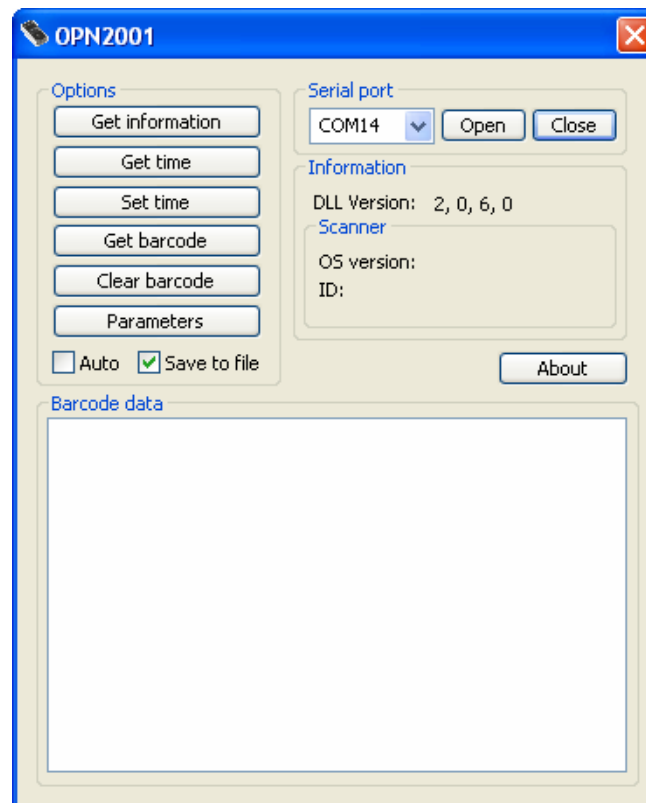


OPN 2001 Download Utility

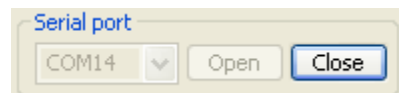


The OPN 2001 Download Utility application is designed to handle the transfer of collected data from the Opticon OPN 2001 units to a host PC. The utility also allows the user to configure the unit and change its settings.

Brief Description of the Options



Serial Port



Use to open the serial port assigned to the OPN 2001. After selecting the correct port number, click **Open**. After connecting, the **Open** box becomes transparent. The OPN 2001 is now ready to communicate with the Download Utility. Click on the **Close** box to close the com port.

Get Information

Get information

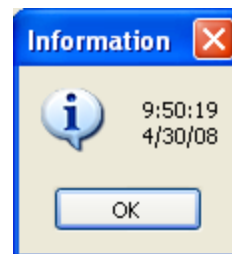
Indicate the OS version and serial number of the unit.



Get Time

Get time

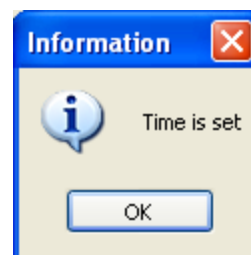
Display the real time clock current time and date.



Set Time

Set time

Update the time and date in the unit internal clock to current time. After updating the time, a confirmation message is displayed.



Get Barcode

Get barcode

Use this option to upload the collected data to the PC. The OPN 2001 will send the data. The collected data is displayed on the lower part of the screen.

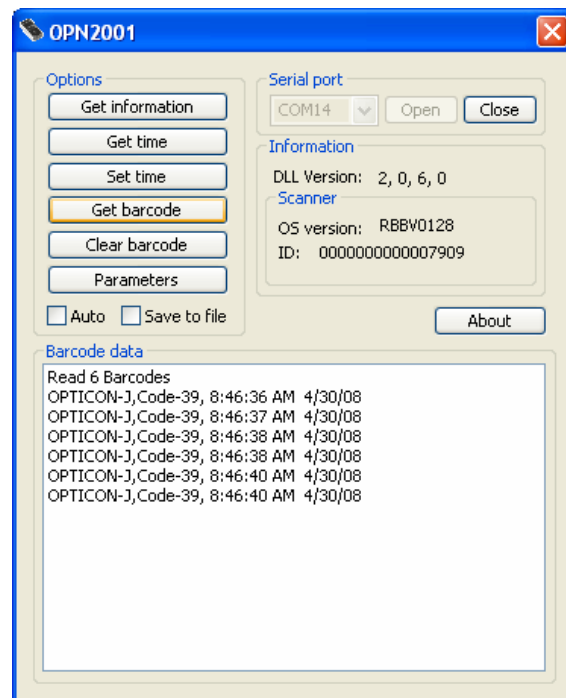
Options:

Save to file

To upload the data and store it as a text file, first place a check mark on **Save to file** before selecting **Get Barcode**.

Auto

Use this option to automatically transfer the data in memory once the OPN 2001 is connected to the host computer. The unit will transfer the data immediately without the need to select **Get Barcode**.



Clear Barcode

Clear barcode

Deletes completely all collected data from memory. Before selecting this option, make sure the collected data has been uploaded to you host computer.

Parameters

Parameters

Display current settings of the unit and allows changing of parameters.

The screenshot shows a window titled "Parameters" with a list of settings. Each setting has a value and a dropdown arrow. At the bottom, there is a "Transmit" label and two buttons: "Default" and "Settings".

Code-39	1 - Enable
UPC	1 - Enable
Code-128	1 - Enable
Code-39 Full ASCII	0 - Disable
UPC Supps	2 - Auto-D
Convert UPC-E to A	0 - Disable
Convert EAN-8 to EAN-13	0 - Disable
Convert EAN-8 to EAN-13 Type	1 - Enable
Send UPC-A Check Digt	1 - Enable
Send UPC-E Check Digt	1 - Enable
Code-39 Check Digt	0 - Disable
Xmit Code-39 Check Digt	0 - Disable
UPC-E Preamble	2 - Sys cha...
UPC-A Preamble	2 - Sys cha...
EAN-128	1 - Enable
Coupon Code	1 - Enable
I 2 of 5	1 - Enable
I 2of5 Check Digt	0 - Disabled
Xmit I 2of5 Check Digt	0 - Disable
Convert ITF14 to EAN 13	0 - Disable
I 2of5 Length 1	5

Settings

After changing any parameter, select **Settings** to send the new changes to the unit. After transmitting the new settings, close the parameter window.

Default

Select the **Default** option to set the unit to factory defaults. After transmitting the default settings, close the parameter window.